

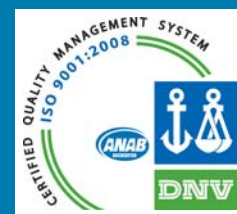


# ASSMANN POLYETHYLENE TANKS



Certified to NSF/ANSI 61

*The Assmann Difference  
is in the Process*





Assmann polyethylene vertical storage tanks at a northern Illinois chemical company.

## *The Way We Process Makes the Difference*

Assmann Corporation is a manufacturer of rotationally molded tanks, ranging from 40 to 12,000 gallons, engineered and processed for the most challenging chemical handling and storage applications.

Our commitment is to provide a superior tank for the harshest chemical service. Experienced tank users receiving an Assmann unit for the first time will remark favorably on how it compares with tanks already in their systems.

We begin by selecting resins with the best properties for the application based on our thirty plus years of molding and in-the-field experience. These include ExxonMobil LL-8461 (LLDPE) and ExxonMobil cross-linkable Metallocene resin among others.

However, it is the processing (equipment, tooling and procedures) that will determine the quality of the final product.



Assmann conical bottom storage tanks at a central Indiana chemical company.

## The Way We Process

### 1. Molding

Our unique and efficient large ovens, which rotate end-over-end, receive convection heat from an adjacent stationary furnace. The oven shape and foil design create optimum airflow and uniform heat to set the first stage for the highest quality parts possible.

We never exceed 500° F in the molding process. Using higher temperatures will speed up the cycle time and cut costs but will compromise the results, particularly in XLPE and thicker wall parts.

### 2. Cooling without water

We have separate chambers using only very high volume air movement to assure a gradual cooling of the mold and the part inside. This allows the cross-linking process, still taking place upon exiting the oven chamber, to complete all the way through the tank wall. This is essential to optimize the properties of the cross-linked part. (The whole idea is to achieve as close to 100% cross-linking as possible).

Even in 1.45" thick walls, we consistently attain gel test results (indication of % of cross-linking that has taken place) in the high 70's and low 80's. (ASTM minimum gel requirement is 60%).

It is also important to mention that tanks molded of linear resins, and processed in this manner, will also reach their optimum cure rate.

We introduce no water into our cooling cycle. Water spray or mist will speed up the process, but will abruptly stop the cross-linking and set up the stresses that will shorten the service life of the tank.

### 3. Tooling

Equally important in our process is that we do not "shield" the outside of our tank molds. We exceed ASTM design hoop stress minimums for the lower sidewall and carry this wall thickness as uniformly as possible throughout the entire tank for maximum structural integrity.

In a competitive marketplace it has become a common practice to wrap and weld layers of sheet metal (shielding) around the outside of the mold to reduce heat transfer and thereby reduce thickness over as much as 80% of the area of the tank. Upper sidewalls, domes and tank bottoms are often reduced to less than 25% of the thickness of the lower sidewall.

Some of the obvious consequences of this practice:

- There is greater damage when tank restraint systems are put to the test.
- Tank domes may collapse, even under snow weight.
- Stress cracking agents along with UV deterioration will accelerate dome failure.

Also, it is important to note "shielding" triggers a loss of control in the process resulting in uneven cooking and significant variations in gel percentages over the tank structure. This will also shorten the service life of the part.

Those using this technique sell it as "state-of-the-art" by marketing with such terms as "tapered", "engineered", "stratified walls", and "strategic material placement". The intent is only to reduce raw material costs. The savings, however, are rarely passed on to the end user.

## Our Position

Since the rotational molding process uses no pressure it will yield a stress free tank or part, but only if basic processing rules are followed.

We at Assmann Corporation are constantly finding ways to increase efficiency in our process but will not abandon successful methods for any cost-cutting measure that would compromise the quality of the product for which we have become known.

Our plant personnel are our "experts". They have pride in the plant and their workmanship. All of us extend a welcome to visit our plant in Garrett, Indiana.

For information, quotations or plant tours, please call us at 1-888-357-3181.

## Contents

Introduction.....	2-3
Contents.....	3
Vertical Storage Tanks.....	4
Double Wall Tanks and Accessories.....	5-6
Conical Bottom Storage Tanks.....	7
Cylindrical Horizontal Tanks.....	8
Free-Standing Horizontal Leg Tanks.....	8
Miscellaneous Storage Tanks.....	9
Open Top Storage Tanks.....	9
Double Wall Base Containers.....	9
Chemical Feed Stations.....	10
Rectangular Secondary Containment Basins.....	11
Cylindrical Secondary Containment Basins.....	12
Accessory Material Options Selection.....	13
Flange Fittings.....	14
Bulkhead Fittings.....	14
316 Stainless Steel Fittings.....	15
PVC Self-Aligning Dome Fittings.....	15
Polyethylene Welded Connections for Linear Tanks.....	16
U-Vent Assemblies.....	16
Fill Line/Drop Tube Assemblies.....	17
Anti-Foam Elbow.....	17
Sight Gauge Assemblies.....	18
Passive Restraint Assemblies.....	18
Tie-Down Assemblies.....	19
Leak Detection.....	19
Tank Heat Tracing and Insulation.....	20
Fiber Reinforced Ladder Assemblies.....	21
Agitator Support Brackets.....	21
Chemical Resistance Data.....	22-23
Checklist of Information.....	24
Assmann Corporation of America Warranty.....	24

## Vertical Storage Tanks

Rotationally molded tanks from your choice of virgin high density cross-link or FDA-compliant linear polyethylene. Either is more corrosion and chemical resistant than fiberglass, stainless or mild steel. Tanks are semi-translucent, one-piece seamless molded units with gallon markers and access openings molded-in. Wall thickness conforms to ASTM D-1998 standards for liquid storage. Narrow diameters for space-saving in-plant use. They possess excellent low temperature impact resistance and are U.V. stabilized. Available in natural color or optional blue, green, red, yellow or black. Can be equipped with accessories to fit your needs.



Model Number	Capacity (US Gallons)	Dimensions (inches)		Weight (lbs) Linear and Crosslink Polyethylene				Access Opening (inches)
		Diameter	Height	1.35 Sp. Gravity	1.5 Sp. Gravity	1.9 Sp. Gravity	2.2 Sp. Gravity	
ICT 40	40	20	38	N/A	N/A	20	N/A	16
ICT 60	60	23	42	N/A	N/A	28	N/A	16
ICT 65	65	23	44	N/A	N/A	28	N/A	7
ICT 80	80	24	49	N/A	N/A	30	N/A	16
ICT 120	120	29	52	N/A	N/A	50	N/A	7
ICT 140	140	29	58	N/A	N/A	50	N/A	16
ICT 175	175	35	51	N/A	N/A	56	N/A	16
ICT 200 (35")	200	35	57	N/A	N/A	64	N/A	16
ICT 200 (36")	200	36	53	N/A	N/A	60	N/A	16
ICT 250	250	35	69	N/A	N/A	75	N/A	16
ICT 300	300	35	82	N/A	N/A	85	115	16
ICT 400	400	48	63	N/A	N/A	99	120	16
ACT 550	550	69	43	N/A	N/A	120	120	16
ICT 550	550	48	82	N/A	130	130	160	16
IFT 550	550	48	83	N/A	130	130	160	11
ICT 625	625	48	93	N/A	N/A	140	175	16
ICT 700	700	69	58	N/A	130	150	175	16
ICT 850	850	48	120	166	180	230	267	16
IFT 950	950	64	83	171	190	205	240	11
ICT 1000	1000	64	84	171	190	205	240	16
ICT 1100	1100	86	55	171	190	220	260	16
ICT 1200	1200	64	100	203	260	330	350	16
ACT 1500	1500	86	74	227	250	320	420	16
ICT 1500	1500	64	121	295	320	415	480	16
ICT 1850	1850	96	78	335	350	400	605	16
ICT 2000	2000	86	100	335	375	445	665	16
ICT 2050	2050	64	165	450	500	620	800	16
ICT 2400	2400	96	95	412	450	620	800	16
ICT 2500	2500	86	119	441	450	620	808	16
ICT 2900	2900	96	111	568	620	800	990	16
ICT 3000	3000	90	122	568	620	800	1035	16
ICT 4000	4000	90	162	782	850	1100	1620	16
ICT 4100	4100	119	108	782	850	1100	1400	24*
ICT 4200	4200	96	152	782	850	1100	1620	16
ICT 5200	5200	105	160	1101	1200	1550	1895	24*
ICT 5500	5500	119	141	1215	1350	1600	2200	24*
ICT 5600	5600	96	196	1350	1500	1750	2600	24*
ICT 6500	6500	105	193	1776	1900	2500	2850	24*
ICT 6510	6510	119	163	1575	1750	2000	2450	24*
ICT 7300	7300	119	177	2028	2244	2866	3299	24*
ICT 8000	8000	143	142	1989	2200	2800	3250	24*
ICT 8410	8400	119	201	2758	3065	3882	4495	24*
ICT 10000	10000	143	173	2700	3000	3400	4770	24*
ICT 12000	12000	143	196	3400	3800	4400	5340	24*

\*All 24" manway access covers are hinged. Model number availability and individual specifications subject to change without notice. Gallonage and weights are approximate. All wall thicknesses conform to ASTM D-1998.

## Double Wall Tanks

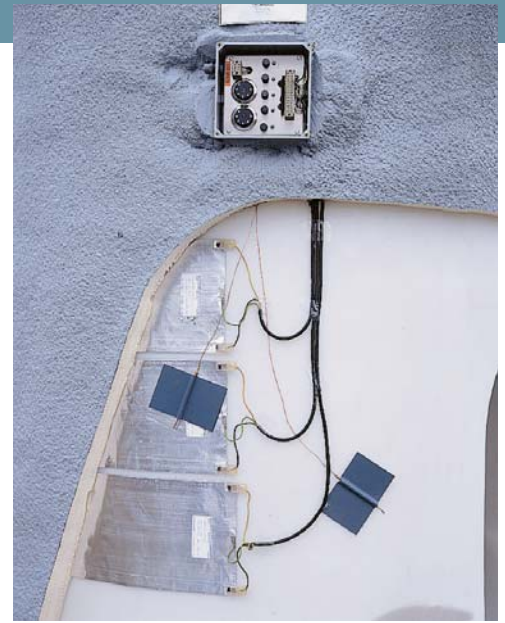
Double wall tanks (IMT) provide the best protection against hazardous chemical spills into the environment. Inner tank dome overlaps outer tank sidewall to prevent rainwater, snow and debris from entering into the containment basin. Our ability to heat trace and insulate make these tanks perfect for temperature sensitive chemicals. Molded-in lifting lugs and upper fitting flats are standard. Molded-in lower fitting flats, along with a sturdy Assmann designed bottom outlet, reduce the cost of expensive double wall outlets.

All double wall tanks are designed with wall thicknesses equal to or greater than that required by ASTM D-1998 standards. Double wall tanks can be customized by adding Seismic zone 4 or 120 MPH wind load tie down assemblies, leak detection, ultrasonic level indicators, and ladders.

### Accessories for Double Wall Tanks

- Seismic zone 4 restraint
- 120 MPH wind load restraint
- Ultrasonic level indicator
- Leak detection system
- High and low level alarms
- Heat tracing and insulation
- Fiber Reinforced Ladders
- Top discharge assemblies with foot valve
- Standard 16" or optional 21" top manways

Double wall tanks can be equipped with accessories to fit your specifications (See pages 13-21.)



Model Number	Cap. (US Gals)	Dimensions (inches)		Weight (lbs) Linear Polyethylene						Weight (lbs) Crosslink Polyethylene						Access Open. (in)
				Primary Sp. Gravity			Secondary Sp. Gravity			Primary Sp. Gravity			Secondary Sp. Gravity			
		Dia.	Hgt.	1.5	1.9	2.2	1.5	1.9	2.2	1.5	1.9	2.2	1.5	1.9	2.2	
<b>IMT 550</b>	550	60	73	N/A	130	159	N/A	130	151	N/A	130	159	N/A	130	159	16
<b>IMT 1050</b>	1050	72	87	185	205	233	191	244	283	185	205	226	176	221	256	16
<b>IMT 1550</b>	1550	72	123	325	408	472	309	392	454	297	380	440	283	359	416	16
<b>IMT 2050</b>	2050	72	159	551	691	809	596	748	875	505	633	738	545	697	799	16
<b>IMT 2550</b>	2550	96	119	643	823	953	499	632	732	600	748	866	457	579	671	16
<b>IMT 3050</b>	3050	96	138	817	1022	1183	694	879	1018	739	944	1093	636	806	933	16
<b>IMT 4050</b>	4050	96	177	1252	1607	1870	1178	1492	1728	1158	1476	1700	1178	1492	1728	16
<b>IMT 5250</b>	5250	119	154	1484	1920	2225	1342	1699	1968	1372	1753	2025	1230	1558	1804	16
<b>IMT 6550</b>	6550	119	186	2181	2778	3200	2028	2569	2974	2000	2570	2960	2028	2569	2974	16

Model number availability and individual specifications subject to change without notice. Gallonage and weights are approximate. All wall thicknesses conform to ASTM D-1998.

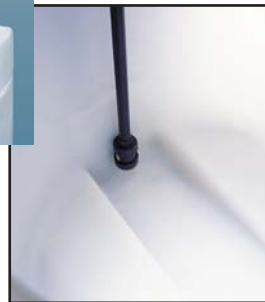
## Small Double Wall Tanks

This system consists of a primary inner tank and secondary containment, with a capacity of 120% of the inner tank, exceeding EPA standards and complies with 40 CFR-264.193.

- Inner tank dome overlaps outer tank sidewall to prevent rainwater, snow, and debris from entering secondary containment, making system ideal for outdoor storage of chemicals.
- Molded 7" threaded top access opening is standard. This access opening is chemically resistant and fume tight. Larger access openings available.
- Small footprints of 34½" & under will fit through standard 36" doorway to allow convenient system location within tight manufacturing areas.
- Molded in pump shelf is ideal for installing chemical pumps and metering equipment. This pump shelf is recessed in the top of the tank to contain small chemical spills.
- Recessed lower fitting flat will allow fittings to penetrate through the secondary containment wall and into the primary tanks sump. This feature allows full flooded suction for outlet assemblies.
- Interstitial leak detection systems option available.



Molded in pump shelf is recessed in the top of the tank. Shown w/optional metering pump.



Molded in sump in the primary tank is located directly below the pump shelf. Suction lines can be lowered onto the sump area, which will allow for maximum drainage of chemical with top discharge assemblies.



Inner tank dome overlaps outer tank to prevent contamination.

Model Number	Cap. (US Gals)	Dimensions (inches)		Weight (lbs) Linear Polyethylene						Weight (lbs) Crosslink Polyethylene						Access Open. (in)
				Primary Sp. Gravity			Secondary Sp. Gravity			Primary Sp. Gravity			Secondary Sp. Gravity			
		Dia.	Hgt.	1.5	1.9	2.2	1.5	1.9	2.2	1.5	1.9	2.2	1.5	1.9	2.2	
IMT 20	20	26 1/8	21 3/8	N/A	17	N/A	N/A	17	N/A	N/A	17	N/A	N/A	17	N/A	7
IMT 40	40	26 1/8	33 1/2	N/A	26	N/A	N/A	26	N/A	N/A	26	N/A	N/A	26	N/A	7
IMT 65	65	26 1/8	47 3/4	N/A	36	N/A	N/A	36	N/A	N/A	36	N/A	N/A	36	N/A	7
IMT 85	85	34 1/2	38 1/2	N/A	45	N/A	N/A	45	N/A	N/A	45	N/A	N/A	45	N/A	7
IMT 120	120	34 1/2	51	N/A	56	N/A	N/A	56	N/A	N/A	56	N/A	N/A	56	N/A	7
IMT 150	150	47	44	N/A	65	N/A	N/A	65	N/A	N/A	65	N/A	N/A	65	N/A	7/16
IMT 165	165	34 1/2	66	N/A	69	N/A	N/A	69	N/A	N/A	69	N/A	N/A	69	N/A	7
IMT 250	250	47	61	N/A	95	N/A	N/A	95	N/A	N/A	95	N/A	N/A	95	N/A	7/16
IMT 405	405	47	76	N/A	74	82	N/A	77	90	N/A	74	77	N/A	77	82	7/16

Model number availability and individual specifications subject to change without notice. Gallonage and weights are approximate. All wall thicknesses conform to ASTM D-1998.

## Conical Bottom Storage Tanks

Conical bottom tanks (OTCB, ICB) are available in seamless molded one piece units from either virgin high density crosslink or FDA-compliant linear polyethylene. A funnel shaped conical bottom with 30° or 45° slope is molded-in as are gallon markers and access openings. They have more resistance to corrosion and chemicals than fiberglass, stainless or mild steel. Wall thickness conforms to ASTM D-1998 standards for liquid containment. They possess excellent low temperature impact resistance and are U.V. stabilized against degradation by sunlight. Factory approved steel support work is required or can be supplied. Tanks are available in natural color or optional blue, green, yellow or black. Other options include agitator support brackets, ladders and tie-down assemblies. They can be equipped with accessories to fit your specifications.



**NEW!**

The APCB 560 gallon all polyethylene conical bottom tank and stand is best suited as a mix vessel for chemicals and corrosive acids. This one piece, full drain tank features molded in fitting placement flats on the tank roof, molded in forklift access for easy tank placement and four anchor points molded into the stand for stability.



Model Number	Capacity (US Gallons)	Slope (degrees)	Dimensions (inches)		Weight (lbs) Linear and Crosslink Polyethylene			Stand Weight (lbs)	Access Opening (inches)
			Diameter	Height	1.5 Sp. Gravity	1.9 Sp. Gravity	2.2 Sp. Gravity		
<b>OTCB 300</b>	300	45	49	88	N/A	115	133	210	Open Top
<b>OTCB 600</b>	600	45	57	105	N/A	180	208	260	Open Top
<b>OTCB 1100</b>	1100	45	69	109	173	218	255	350	Open Top
<b>APCB 560</b>	560	30	54	90	N/A	180	N/A	215	16
<b>ICB 1100</b>	1100	45	69	116	173	218	255	350	16
<b>ICB 1575</b>	1575	45	86	121	325	450	521	440	16
<b>ICB 2200</b>	2200	30	96	119	500	600	695	440	24 Top hinged
<b>ICB 2600</b>	2600	45	86	159	540	700	811	440	16
<b>ICB 3000</b>	3000	30	90	154	620	825	955	450	16
<b>ICB 4200</b>	4200	30	96	177	850	1000	1158	550	16
<b>ICB 6000</b>	6000	30	143	162	1800	1900	2200	3200	24 Top hinged
<b>ICB 8000</b>	8000	30	143	190	2000	2600	3000	3200	24 Top hinged

\*All 24" manway access covers are hinged. Model number availability and individual specifications subject to change without notice. Gallonage and weights are approximate. All wall thicknesses conform to ASTM D-1998.

## Cylindrical Horizontal Tanks

Cylindrical horizontal tanks (IHT, AHT) are available in various sizes and configurations. Consult factory for specific drawings or configurations. Factory approved steel support stands are required for all cylindrical horizontal tanks. Horizontal stands are standard with epoxy primer and top coat.



Model Number	Capacity (US Gallons)	Dimension (inches)		Weight (lbs) Linear and Crosslink Polyethylene			Stand Weight (lbs)	Access Opening (inches)
		Diameter	Length	1.5 Sp. G	1.9 Sp. G	2.2 Sp. G		
IHT 25	25	23	23	11	13	16	22	6
IHT 55	55	23	36	20	22	29	35	6
IHT 110	110	30	44	40	45	59	48	6
IHT 150	150	32	55	50	55	73	51	6
AHT 150	150	38	42	55	60	81	64	8
IHT 200	200	32	68	65	70	95	69	6
AHT 200	200	38	53	70	95	110	72	8
IHT 300	300	38	73	75	105	122	91	8
IHT 500	500	48	74	120	130	176	116	8
IHT 1000	1000	49	140	325	400	477	230	16
IHT 1650	1650	59	157	500	600	733	290	16
IHT 2500	2500	64	191	650	770	953	1100	21

Model number availability and individual specifications subject to change without notice. Gallonage and weights are approximate. All wall thicknesses conform to ASTM D-1998.

## Free-Standing Horizontal Leg Tanks

Free-standing horizontal storage tanks (IHFS) are similar to the horizontal tanks above, except they have molded-in legs requiring no steel cradle support. Materials and features are similar to vertical and conical tanks.



Model Number	Capacity (US Gallons)	Dimensions (inches)			Weight (lbs) Linear and Crosslinked Polyethylene		Access Opening (inches)
		Diameter	Length	Height	1.9 Sp. G	2.2 Sp. G	
IHFS 55	55	26	33	30	30	35	7/11
IHFS 80	80	25 ¼	43 ¼	30 ½	45	N/A	7/11
IHFS 110	110	29	46	34	60	69	7/11
IHFS 200	200	35	58	40	85	98	7/11
IHFS 300	300	41	68	45	110	127	7/11
IHFS 500	500	47	76	50	145	168	7/11

Model number availability and individual specifications subject to change without notice. Gallonage and weights are approximate. All wall thicknesses conform to ASTM D-1998.

## Miscellaneous Storage Tanks

Industrial Mini Bulk (IMB) and Industrial Mini Drum tanks (IMD) are molded in either high density crosslink polyethylene or NSF Certified linear polyethylene. Molded polyethylene skids are optional for both IMB 120 and 200 models. These skids allow the tank to be lifted and re-located during non-use periods. The IMD series tanks have molded in baffles and forklift access.



Model Number	Capacity (US Gallons)	Dimensions (inches)		Weight (lbs) 1.9 Sp. Gravity		Access Opening (inches)
		Diameter	Height	Linear Polyethylene	Crosslinked Polyethylene	
<b>IMB 120</b>	120	40	30	40	40	6
<b>IMB 200</b>	200	40	44	50	50	6
<b>IMB-Pallet</b>	--	--	4	40	40	--
<b>IMD 110</b>	110	37	32	35	35	6
<b>IMD 175</b>	175	37	45	50	50	6

## Open Top Tanks

Industrial Open Top tanks (IOT) are molded from your choice of virgin high density cross-link or NSF certified linear polyethylene. These flat bottom vertical tanks are molded with a stiffening lip on the top to give the tank rigidity, and they are equipped with shoe-box style cover. Assmann open top tank covers have a unique design that allows the lid to be hinged and stay open. Available in a variety of colors and in sizes ranging from 30 to 680 gallons. As an option for these tanks, Assmann offers both stainless steel and mild steel epoxy coated agitator support stands.



Model Number	Capacity (US Gallons)	Dimensions (inches)		Weight (lbs) 1.9 Sp. Gravity		Access Opening (inches)
		Diameter	Height	Linear Polyethylene	Crosslinked Polyethylene	
<b>IOT 30</b>	30	19	30	18	18	Open top
<b>IOT 40</b>	40	18	41	27	27	Open top
<b>IOT 70</b>	70	22	46	33	33	Open top
<b>IOT 90</b>	90	24	50	42	42	Open top
<b>IOT 150</b>	150	30	51	55	55	Open top
<b>IOT 210</b>	210	35	52	65	65	Open top
<b>IOT 300</b>	300	42	57	95	95	Open top
<b>IOT 400</b>	400	69	32	120	120	Open top
<b>IOT 680</b>	680	69	48	130	130	Open top

## Double Wall Base Containers

Rectangular, low profile, chemical storage tank for various material handling applications. Features a primary tank that holds 450 US gallons, allowing intermediate bulk containers (IBC) to be quickly emptied and back on the road. Constructed from crosslink polyethylene or FDA approved and NSF Certified linear polyethylene.



Model Number	Capacity (US Gallons)	Dimensions (inches)			Weight (lbs) Linear and Crosslinked Polyethylene		Access Opening (inches)
		Width	Length	Height	1.9 Sp. G	2.2 Sp. G	
<b>BC 450</b>	450	73	73	44	802	N/A	11

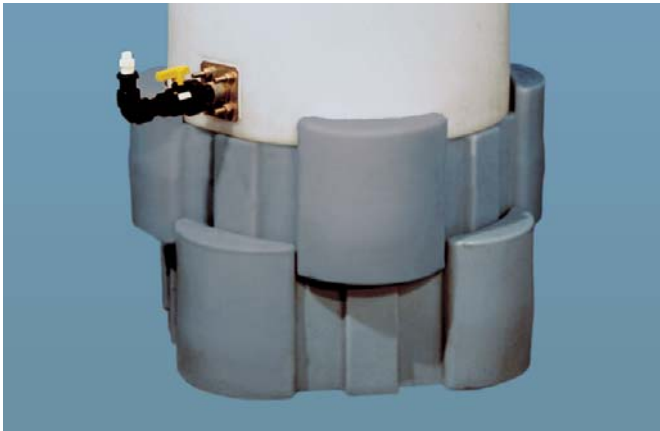
Model number availability and individual specifications subject to change without notice. Gallonage and weights are approximate. All wall thicknesses conform to ASTM D-1998.

## Chemical Feed Stations

Complete ready to use Chemical Feed Stations (CFS) allow you to handle small amounts of liquids and other chemicals without the handling costs and inconvenient disposal of drums. Lightweight, easy to handle, and self contained construction adds to the complete ready to use design. Added features such as molded pump shelves, polyethylene primary tank stands, custom design fittings, and accessories help to individualize any customer's needs. Chemical Feed Stations are constructed from high density crosslink polyethylene or FDA compliant linear polyethylene.



Polyethylene pump shelf supports most pumps and metering devices. Optional fiberglass shelves are available for pumps and metering devices totaling 25 pounds or more.



Optional polyethylene stands, which may be stacked 2-high, support the primary tank for gravity feed.

Model Number	Capacity (US Gallons)	Dimensions (inches)			Access Opening (inches)
		Length	Width	Height	
<b>CFS 40</b>	40	32	26	38	16
<b>CFS 60</b>	60	47	32	42	16
<b>CFS 80</b>	80	47	32	49	16
<b>CFS 140</b>	140	52	38	58	16
<b>CFS 175</b>	175	60	43	51	16
<b>CFS 200</b>	200	60	43	57	16
<b>CFS 250</b>	250	72	43	69	16
<b>CFS 300</b>	300	72	43	82	16
<b>CFS 550</b>	550	83	64	82	16

Model number availability and individual specifications subject to change without notice. Gallonage and weights are approximate. All wall thicknesses conform to ASTM D-1998.

## Rectangular Secondary Containment Basins

Secondary containment basins (IRD) are molded in virgin high density crosslink or FDA-compliant linear polyethylene. They have a tapered design for nesting during shipping. These meet or exceed EPA requirements for containment of dangerous chemicals. Check with local regulatory agencies for compliance in your area. When determining size of secondary containment basins, always refer to factory drawings to confirm primary storage tank size compatibility.

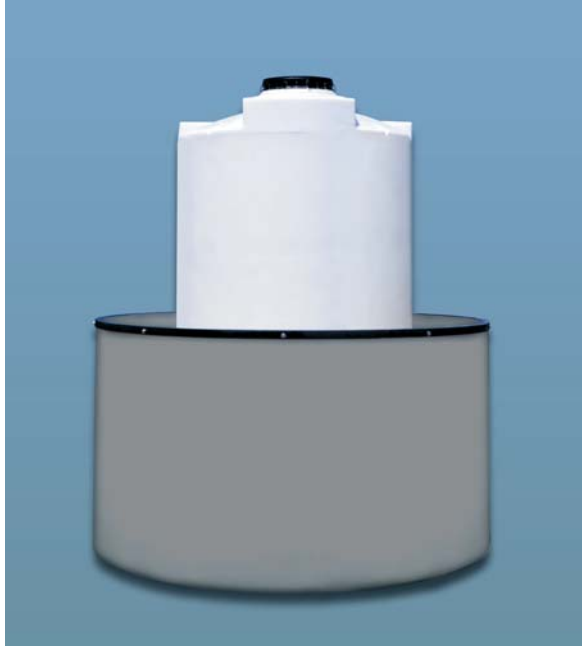


Model Number	Capacity (US Gallons)	Dimensions (inches)			Contains Tank Max. Diameter (inches)	Weight (lbs) Linear PE
		Length	Width	Height		
IRD 40	52	32	26	20	20	25
IRD 80	95	47	32	20	24	40
IRD 140	155	52	38	24	29	65
IRD 200	200	57 ½	45	24	35	75
IRD 240	240	60	43	28	35	80
IRD 275	275	64 ½	52	24	42	75
IRD 330	330	72	43	31	35	90
IRD 375	375	66	66	24	58	100
IRD 495	495	69	69	29	61	125
IRD 660	660	83	64	40	48	220
IRD 950	950	83	83	46	68	320
IRD 1650	1650	99	99	53	84	400
IRD 1750	1750	218	108	21	2 each 90	400
IRD 3500	3500	218	108	40	2 each 90	700

Model number availability and individual specifications subject to change without notice. Gallonage and weights are approximate. All wall thicknesses conform to ASTM D-1998.

## Cylindrical Secondary Containment Basins

These cylindrical containment tanks (IRD) are available in either virgin high density crosslink or medium density FDA-compliant linear polyethylene. A 2"×2"×3/16" angle iron top support ring is optional and can be ordered separately. Epoxy painted mild steel or 316 stainless steel rings are available. Basins meet or exceed EPA standards. Local regulations should be checked to assure compliance.



Model Number	Capacity (US Gallons)	Diameter (inches)		Contains Tank Max. Diameter (inches)
		Diameter	Cut Height	
<b>IRD 550</b>	up to 690	60	0 to 58	48
<b>IRD 1050</b>	up to 1200	72	58 to 72	64
<b>IRD 1550</b>	1200 - 1800	72	72 to 108	64
<b>IRD 2300</b>	1800 - 2300	72	108 to 135	64
<b>IRD 1100</b>	up to 982	86	0 to 40	82
<b>IRD 150A</b>	982 to 1301	86	40 to 53	82
<b>IRD 2000</b>	1301 to 1891	86	53 to 77	82
<b>IRD 2500</b>	1891 to 2406	86	77 to 98	82
<b>IRD 3000</b>	up to 2881	90	0 to 107	86
<b>IRD 4000</b>	2881 to 3877	90	107 to 144	86
<b>IRD 1850</b>	up to 1760	96	0 to 58	92
<b>IRD 2400</b>	1760 to 2277	96	58 to 75	92
<b>IRD 2900</b>	2277 to 2762	96	75 to 91	92
<b>IRD 4100</b>	up to 3900	119	0 to 84	115
<b>IRD 4200</b>	2762 to 4200	96	91 to 140	92
<b>IRD 5600</b>	4200 to 5300	96	140 to 177	92
<b>IRD 5200</b>	up to 4800	105	0 to 133	101
<b>IRD 6500</b>	4800 to 6200	105	133 to 172	101
<b>IRD 5500</b>	3900 to 5400	119	84 to 116	115
<b>IRD 6510</b>	5400 to 6100	119	116 to 131	115
<b>IRD 8000</b>	up to 7800	143	0 to 116	139
<b>IRD 10000</b>	7800 to 9900	143	116 to 147	139
<b>IRD 12000</b>	9900 to 11000	143	147 to 163	139

Model number availability and individual specifications subject to change without notice. Gallonage and weights are approximate. All wall thicknesses conform to ASTM D-1998.

# Accessories

Assmann offers a wide variety of accessories to compliment our storage tank line. These accessories vary in material type. The table on this page identifies the material options available for the accessories on the upcoming pages.

## COMPONENT MATERIAL OPTIONS

Accessory	Fitting Material	Encapsulated Bolt Bolt/Capsule	Flange Gasket	Flange Adapter	Siphon Drain
Flange Fittings	PVC P/P 316 SS CPVC PVDF Virgin P/P	SS/EPDM SS/VITON Titanium/EPDM Titanium/VITON Has/VITON	EPDM VITON XLPE BUNA-N	PVC P/P 316 SS CPVC PVDF Virgin P/P	PVC P/P 316 SS CPVC PVDF Virgin P/P

Accessory	Fitting Material	Gasket	Flange Adapter	Siphon Drain
Bulkhead Fittings	PVC P/P CPVC PVDF Virgin P/P	EPDM VITON XLPE BUNA-N	PVC P/P CPVC PVDF Virgin P/P	PVC P/P CPVC PVDF Virgin P/P

Accessory	Type	Gasket	Flange Adapter	Siphon Drain
Stainless Fittings	Male Female Double Male	EPDM VITON XLPE BUNA-N	PVC P/P CPVC PVDF Virgin P/P	PVC P/P CPVC PVDF Virgin P/P

Accessory	Fitting Material	Gasket	Flange Adapter
Self-Aligning Dome Fittings	PVC	EPDM VITON XLPE BUNA-N	PVC CPVC P/P

Accessory	U-Vent Material	Gasket	Screen
U-Vent Assemblies	PVC Sch 40 PVC Sch 80 P/P Sch 80 CPVC Sch 80	EPDM VITON XLPE BUNA-N	Stainless Steel

Accessory	Fill Line Material	Drop Tube Material	Bracket Bolts Bolt/Capsule	Bracket Gasket	Union
Fill Line/ Drop Tube Assemblies	PVC P/P	PVC P/P	SS/EPDM SS/VITON Titanium/EPDM Titanium/VITON Has/VITON	EPDM VITON XLPE BUNA-N	PVC P/P

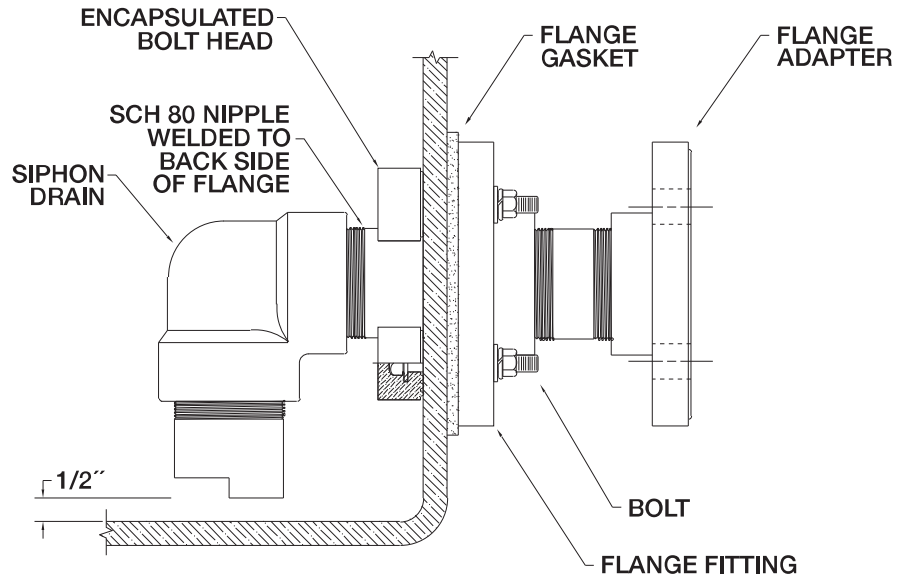
Accessory	Type	Sight Gauge Material	Ball Valve Seals
Sight Gage Assemblies	Single Valve Double Valve Triple Valve	PVC	EPDM VITON

Accessory	Elbow Material
Anti-Foam Elbow	PVC P/P CPVC PVDF

LEGEND	
Abbreviation	Material
PVC	Polyvinyl Chloride
P/P	Polypropylene
316 SS	Type 316 Stainless Steel
CPVC	Chlorinated Polyvinyl Chloride
PVDF	Polyvinylidene Fluoride
Virgin P/P	Unpigmented Virgin Polypropylene
Tit	Titanium
Has	Hastelloy
EPDM	Ethylene Propylene Diene Copolymer
VITON	DuPont Fluoroelastomer
XLPE	Crosslinked Polyethylene
BUNA-N	Butadiene Elastomer

## Flange Fittings

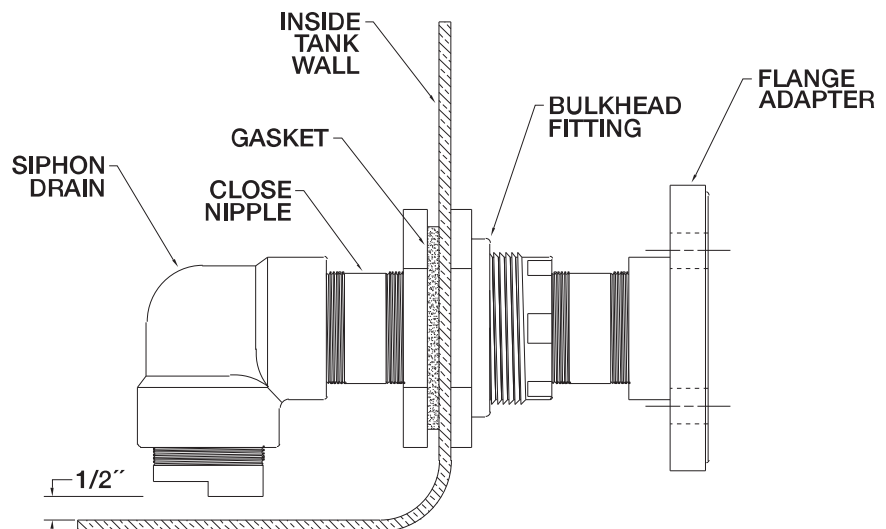
Flange fittings provide a means to connect inlet or drainage plumbing through the wall of the tank. Secured by metal bolts encapsulated in EPDM or VITON elastomers which provides compression for a positive seal. Order by size and material. Bolts, gasket and flange must be ordered separately. Assmann's ANSI-150 psi flange adapter, consisting of nipple and flange, converts a threaded connection to a mating flange. Length of the adapter can be made to your specifications. Siphon drain consists of welded nipple, 90° elbow and nipple to extend to 1/2-inch above tank floor.



Flange Fittings Available Sizes (inches)											
Size	1/2	3/4	1	1 1/4	1 1/2	2	2 1/2	3	4	6	8
Bolts	4	4	4	4	4	4	4	4	8	8	8

## Bulkhead Fittings

Bulkhead fittings are economical tank to plumbing connections available in a variety of materials. Bulkhead fittings and gaskets must be ordered separately. Siphon drains are threaded to fit to bulkhead fittings. Assmann's ANSI-150 psi flange adapter, consisting of nipple and flange, converts a threaded connection to a mating flange.



Bulkhead Fittings Available Sizes (inches)								
Size	1/2	3/4	1	1 1/4	1 1/2	2	3	4

# 316 Stainless Steel Fittings

These fittings provide the through tank wall connection for applications with stringent sanitary requirements met by Type 316 Stainless Steel. All components except the gasket are made of 316 Stainless Steel.

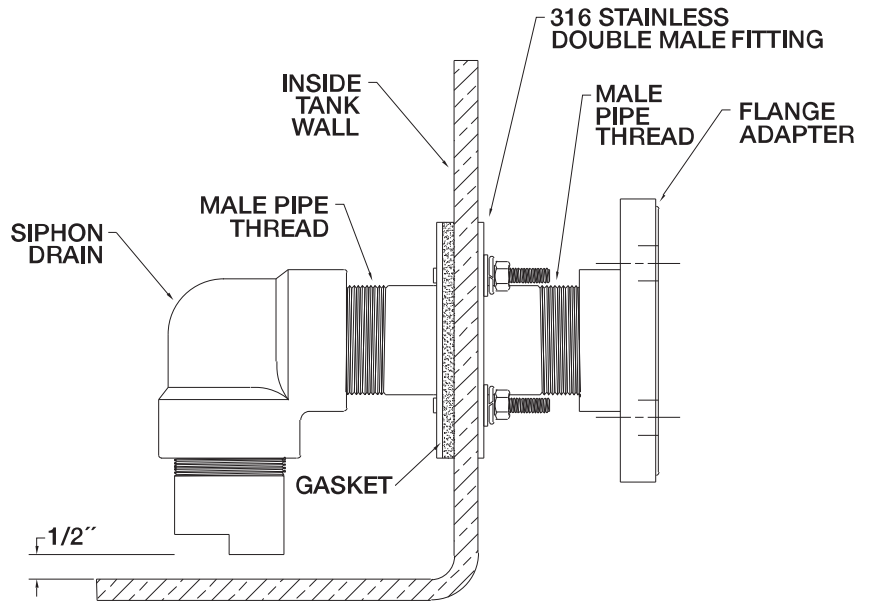
There are three types in nine sizes:

*Male Fitting:* Male pipe thread outside tank wall only.

*Female Fitting:* Female pipe thread inside and outside of tank wall.

*Double Male Fitting:* Male pipe thread inside and outside of tank wall.

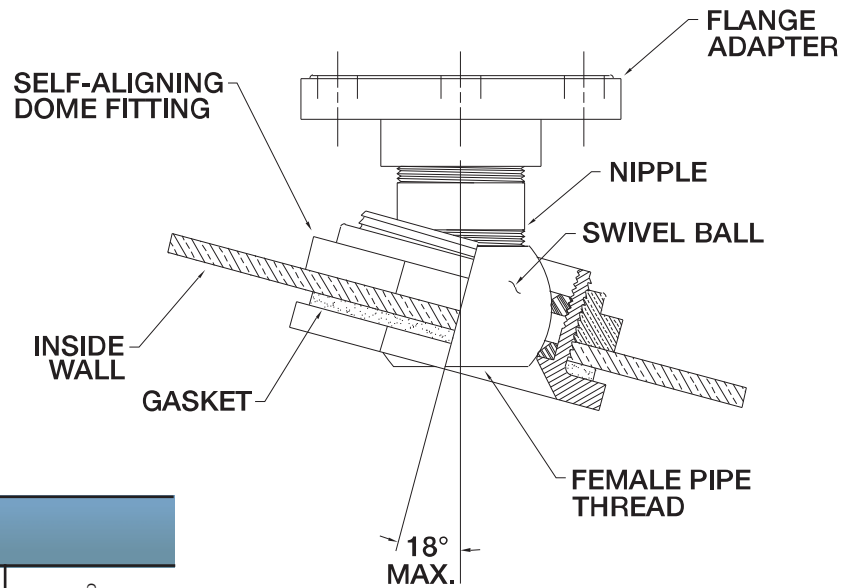
The flange adapter and siphon drain (if applicable) can be applied to all three stainless fitting types listed above.



316 Stainless Steel Fittings Available Sizes (inches)									
<b>Size</b>	1/2	3/4	1	1 1/4	1 1/2	2	2 1/2	3	4
<b>Bolts</b>	4	4	4	4	4	4	4	8	8

# PVC Self-Aligning Dome Fittings

Three sizes of PVC fittings are available which provide a vertical plumbing connection at the top of tanks with a radius dome. The ball socket design corrects for the slope of the dome. The fittings have female pipe thread inside and outside of tank wall. Fitting and gasket must be ordered separately.



Self-Aligning Dome Fittings Available Sizes (inches)			
<b>Size</b>	1	2	3

## Polyethylene Welded Connections for Linear Tanks

FDA compliant welded polyethylene fittings are suitable for use in food, cosmetic, and pharmaceutical industries. Certified welders provide a variety of custom welded

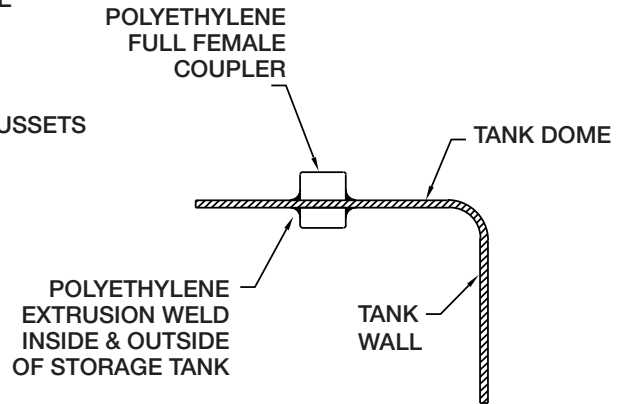
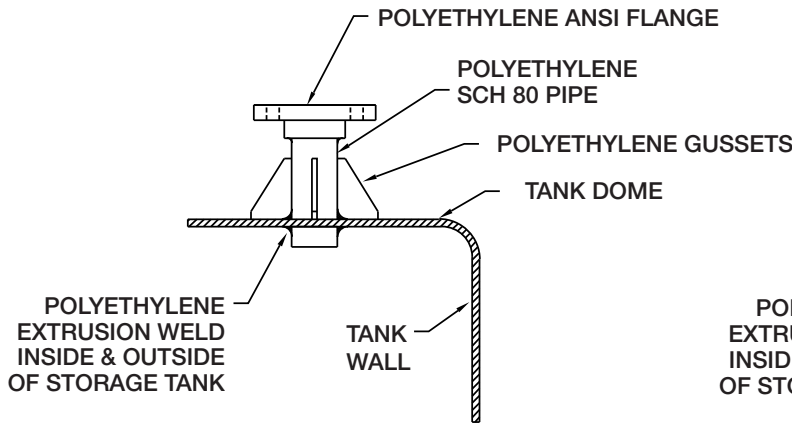
accessories. Polyethylene welded fittings and some welded accessories may only be welded to 1.9 specific gravity or higher tanks.

Polyethylene Full Female Couplers Available Sizes (inches)					
Size	¾	1	1½	2	3

Polyethylene Flange Connections Available Sizes (inches)								
Size	1	2	3	4	6	8	10	12

Polyethylene Pipe Support Brackets Available Sizes (inches)			
Size	1-3	4-6	8-12

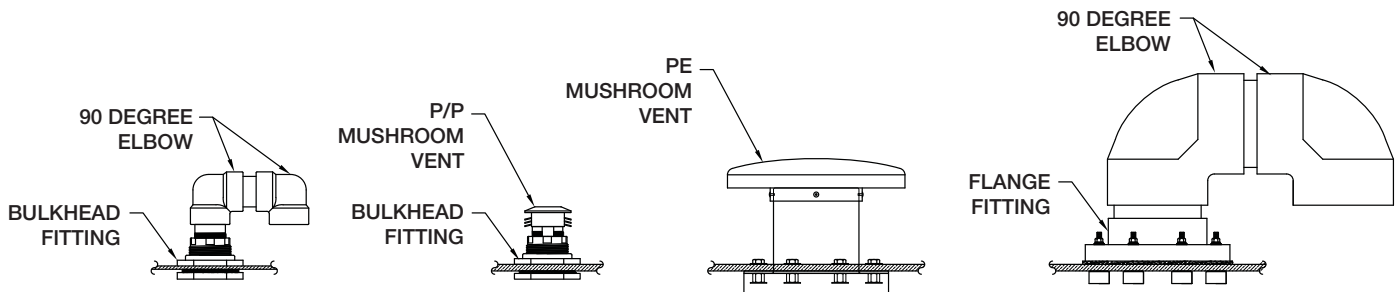
Polyethylene Sch 80 Pipe Per Foot Available Sizes (inches)								
Size	1	2	3	4	6	8	10	12



## Vent Assemblies

Vent assemblies are available in sizes from 2-inch to 6-inch. Vent gasket and bolts (where applicable) must be ordered separately. Stainless steel screens are optional and must be ordered separately.

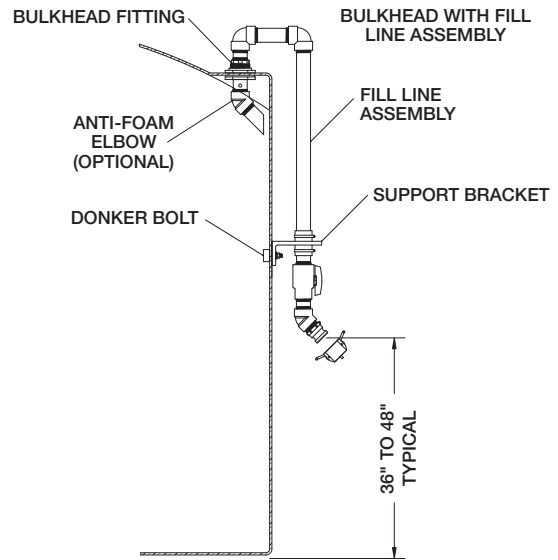
Vent Assembly Sizes (inches)				
Sizes	2	3	4	6



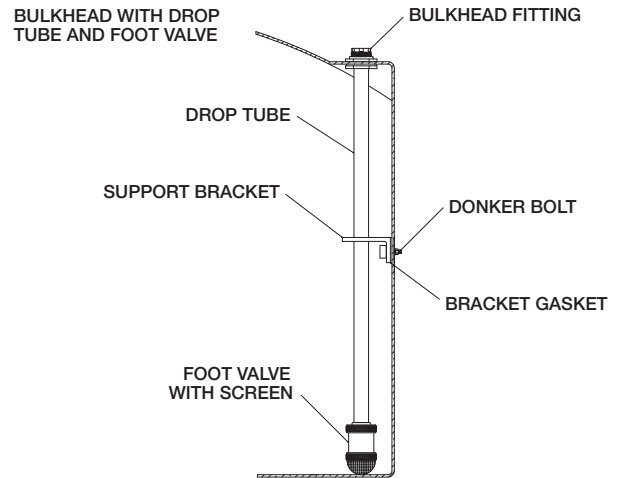
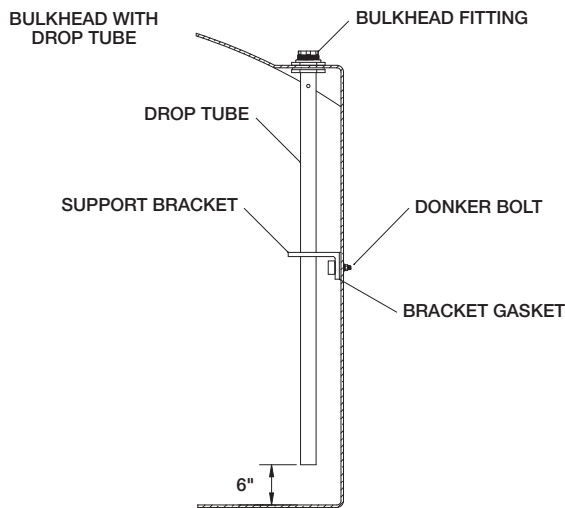
- **Fill Line Assemblies**
- **Drop Tube Assemblies**

These assemblies make it possible to fill the tank from a convenient position outside the tank. They do not include through-wall fittings. The fill line consists of an exterior drop tube, 90° elbow, ball valve, male quick disconnect coupling, dust cap and exterior pipe support bracket. The interior assembly consists of drop tube and pipe support bracket. Gasket and bolts must be ordered separately.

Optional union may be ordered with exterior fill line. When ordering exterior fill line and interior drop tube together, order one gasket and one set of two bolts.



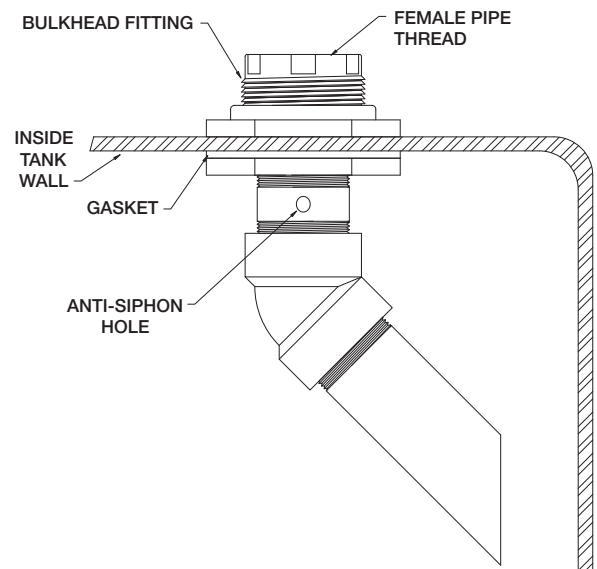
Fill Line and Drop Tube Assemblies Available Sizes (inches)			
Size	1	2	3



## Anti-Foam Elbow

This assembly with 45° elbow and nipple extends to within 3" of the tank wall, directs liquid to run smoothly down the interior surface of the tank. This will reduce the generation of foam on the surface of the contents. Through-wall fitting is not included and must be ordered separately.

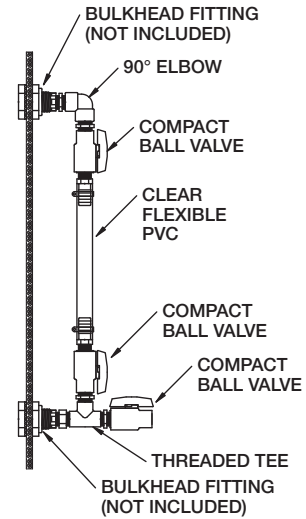
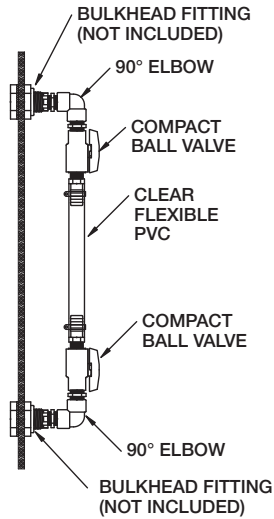
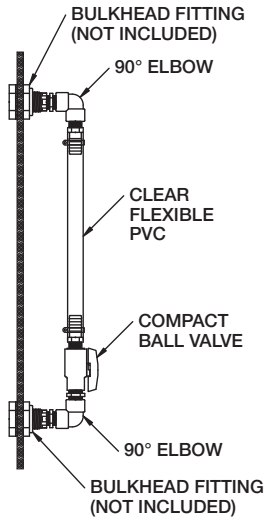
Anti-Foam Elbow Available Sizes (inches)				
Size	1	2	3	4



## Sight Gauge Assemblies

Sight gauge assemblies of 3/4-inch PVC tubing and fittings are available in single, double and triple valve configurations as illustrated. Assembly consists of ball valve(s), nipples, 90° elbows, stainless steel hose clamps, hose barbs, clear flexible

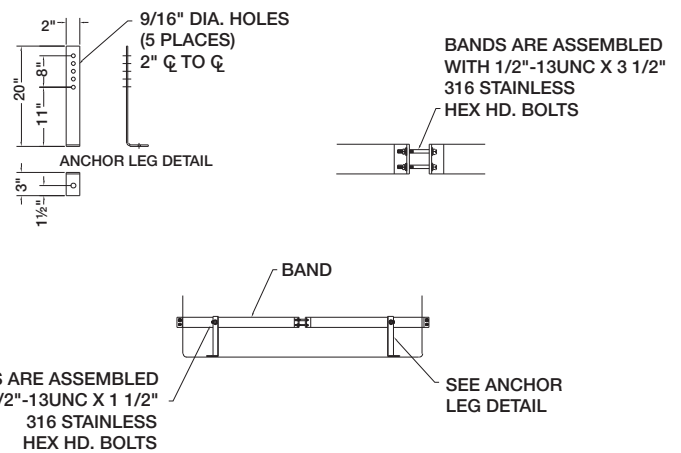
PVC and threaded T-fitting where applicable. Through-wall fittings and/or bulkhead fittings (shown in illustration) are not included and must be ordered separately.



Single Valve Sight Gauge      Double Valve Sight Gauge      Triple Valve Sight Gauge

## Passive Restraint Assemblies

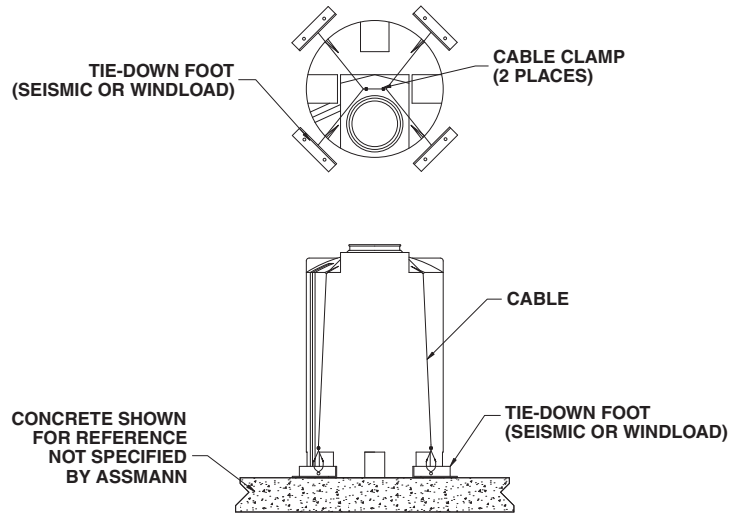
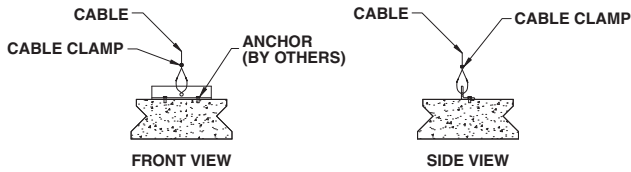
Vertical Tank Passive Restraint (Band Type)		
Tie Down Number	Tank Diameter (inches)	Number of Legs & Bands
TDA 35	35	3
TDA 48	48	4
TDA 64	64	4
TDA 69	69	4
TDA 86	86	4
TDA 90	90	4
TDA 96	96	4
TDA 105	105	4
TDA 119	119	6
TDA 143	143	6



# Tie-Down Assemblies

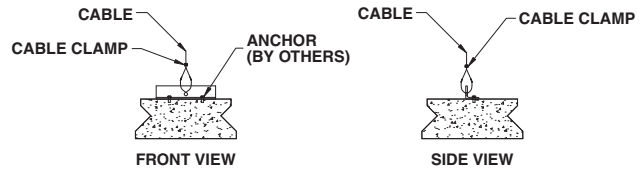
## Seismic Zone 4

Seismic restraint assemblies are designed to handle seismic loads up to and including zone 4. Materials of construction consist of: 316 Stainless Steel or Mild Steel with epoxy coating and galvanized cables.

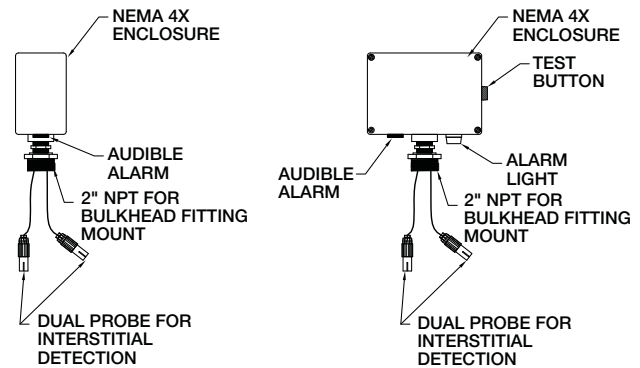
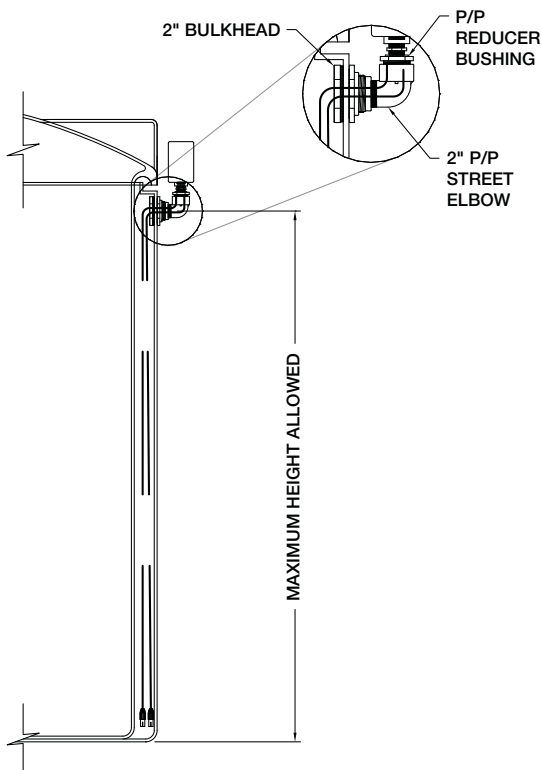


## 120 MPH Wind Load

Wind load tie down assemblies are capable of handling winds up to and including 120 MPH. Materials of construction consist of: 316 Stainless Steel or Mild Steel with epoxy coating and galvanized cables.



## Leak Detection



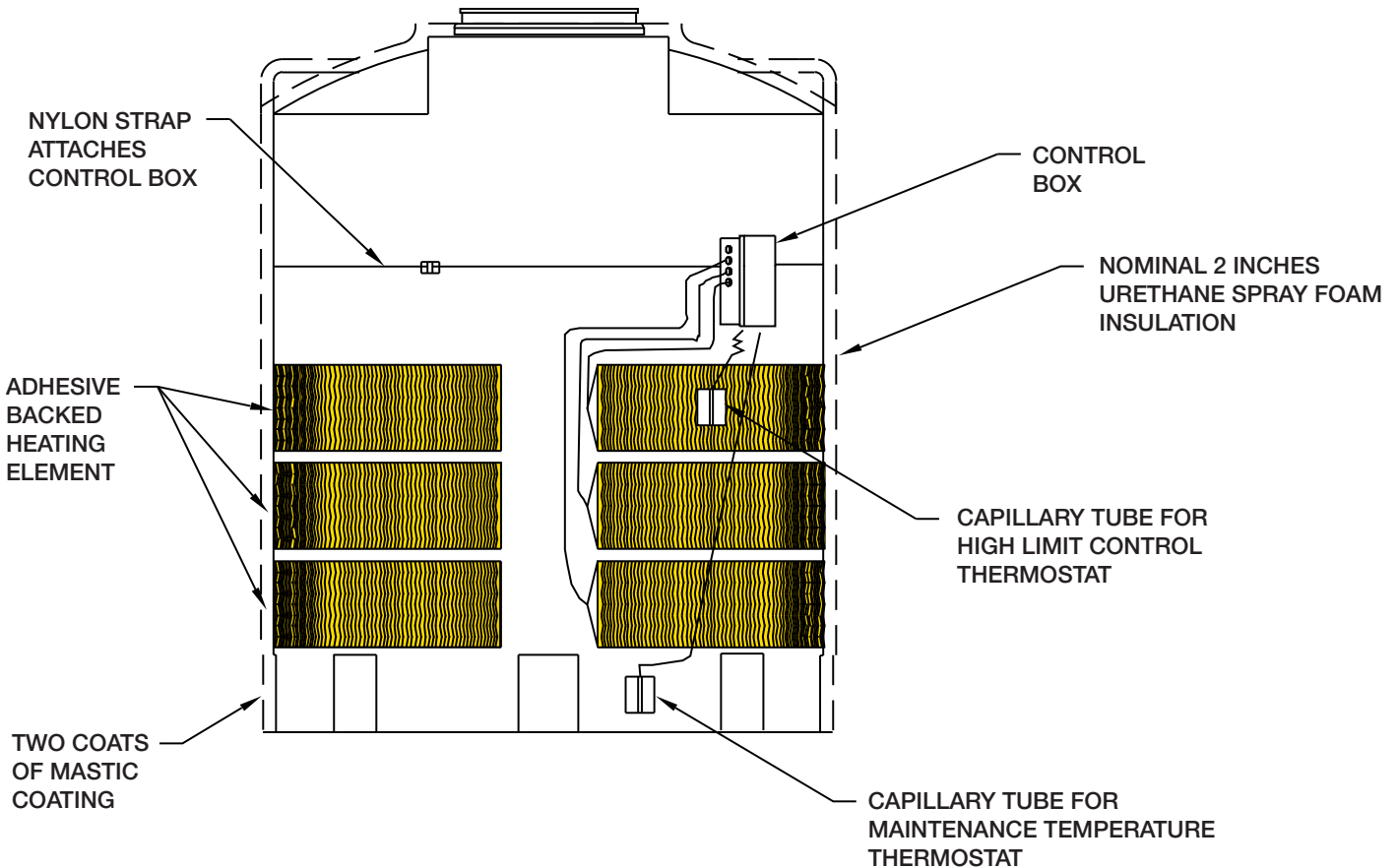
INTERSTITIAL LEAK DETECTION SYSTEM FOR DOUBLE WALL STORAGE TANKS

## Tank Heat Tracing and Insulation

Assmann tanks are available with a heating system to maintain the level required by temperature sensitive stored liquids. Adhesive backed thin carbon strip heat tracing elements embedded in clear polyester film are wrapped around the tank and covered with a two-inch thick layer of polyurethane foam insulation covered with two coats of mastic. A control panel regulates temperature measured by high level and maintenance level thermostats set to desired limits. Using different heat tracing elements, temperature can be maintained at any point above 50°F, 80°F or 100°F over the lowest ambient temperature to which the tank

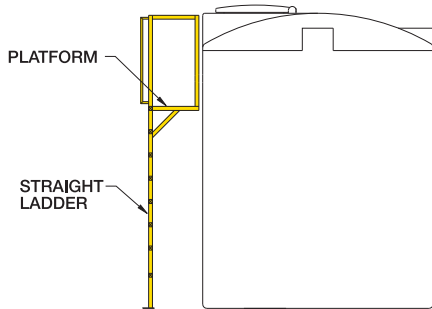
is subjected. Heat tracing and insulation are available for vertical tanks from 300 to 12,000 gallons capacity, conical bottom tanks from 1,575 to 4,200 gallons and horizontal cylindrical tanks from 500 to 2,500 gallons. When requesting information, specify the gallon capacity and the Delta T (DT) for your material (the temperature differential is calculated by subtracting the minimum ambient temperature to which the tank is subject from the temperature at which your material must be maintained).

Control box (115V dual thermostats, 1 high level, 1 maintenance level).

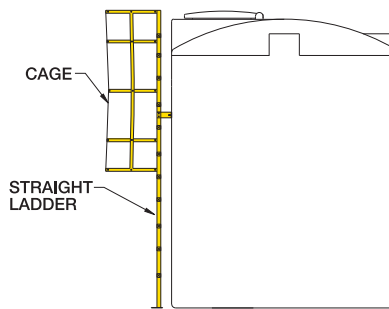


## Fiber Reinforced Ladder Assemblies

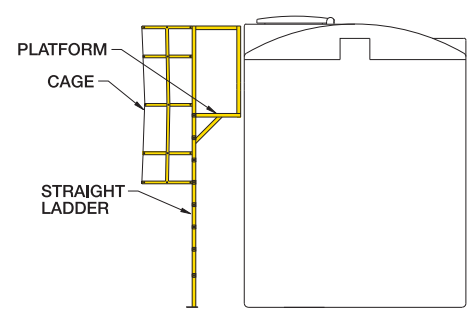
Fiber reinforced ladders conform to OSHA requirements. Ladder assemblies are available in three configurations. Ladder with platform, straight ladder with cage and ladder with cage and platform. These ladders are not designed to gain entry into interior of tanks or for access to dome.



**FRP Ladder with Platform**



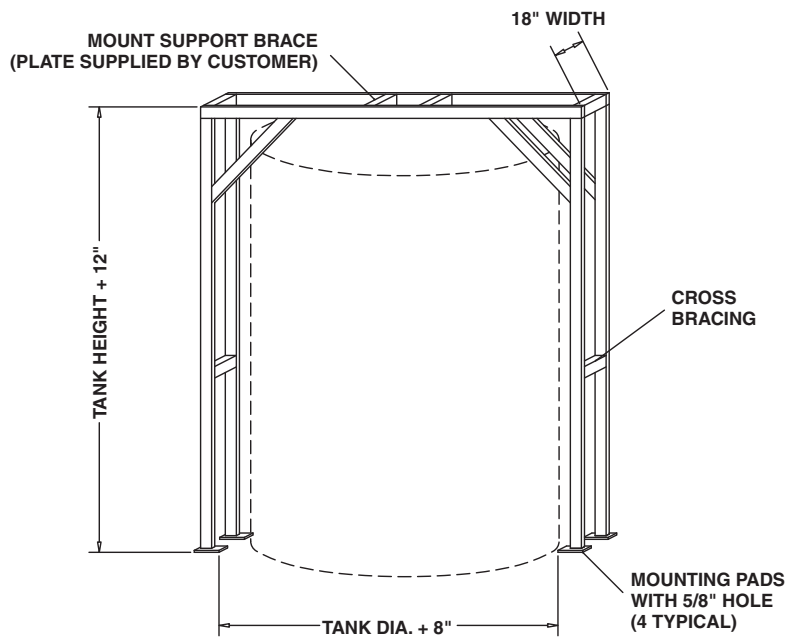
**FRP Ladder with Cage**



**FRP Ladder with Cage and Platform**

## Agitator Support Brackets for Vertical and Conical Tanks

Self supporting agitator support brackets are designed to handle mixers with horse power ratings of 3 or 5 HP. Agitator support stands are made from mild steel and are epoxy painted as a standard. 304 stainless steel is optional.



**CUSTOMER TO PROVIDE MIXER MOUNTING HOLES/BOLTS OR PLATE ONSITE**  
**3HP WITH 18" MOUNTING SUPPORT SPACING 2" x 2" x 3/16" TUBE 4" x 6" x 1/4" MOUNTING PADS**  
**5HP WITH 24" MOUNTING SUPPORT SPACING 3" x 3" x 3/16" TUBE 4" x 8" x 1/4" MOUNTING PADS**



This information is based on our experience, research and support from other published chemical resistance charts. It is believed to be reliable; it is however, intended to be used only as a guide. Assmann Corporation of America assumes no responsibility in connection with its use.

Additional assistance should be requested if there is a doubt about compatibility, suitability, warranty, allowable transportability, or storage in Assmann products.

RATINGS	CHEMICAL ATTACK
A	—No Effect—Excellent—at ambient temperature
B	—Minor Effect—Good—at ambient temperature
C	—Moderate Effect—Fair—additional research required
D	—Severe Effect—NOT RECOMMENDED
—	—No Data

### SERVICE TEMPERATURE LIMITATIONS

Crosslink polyethylene: -40 degree F to +150 degree F  
 Linear polyethylene: -20 degree F to +120 degree F

Note: Constant service temperatures above 100 degree F greatly reduce useful tank life, please consult factory.

Chemical Name	Polyethylene	Polypropylene	P.V.C.	316 Stainless Steel	Titanium	Hastelloy C-276	Viton	E.P.D.M.
Acetic Acid* 1-10%	A	A	B	A	B	A	C	A
Acetic Acid* 10-60%	A	A	C	A	B	A	C	A
Acetic Acid* 80-100%	A	A	C	A	B	A	C	B
Aluminum Chloride-dilute	A	A	A	C	A	A	A	A
Aluminum Chloride-conc.	A	-	A	C	A	A	A	A
Aluminum Fluoride-conc.	A	A	A	C	A	B	-	A
Aluminum Sulfate-conc	A	A	A	A*	A	A	A	A
Alums (all types) conc***	A	A	A	A	A	A	A	A
Ammonia 100% Dry Gas	A	A	A	A	A	-	-	B
Ammonium Carbonate	A	A	A	A	A	B	B	C
Ammonium Chloride-sat'd	A	A	A	A	-	A	B	A
Ammonium Fluoride 20%	A	-	A	-	-	-	-	-
Ammonium Hydroxide 0.888 sq	A	A	A	A	A	A	B	A
Ammonium Metaphosphate sat'd	A	A	A	-	-	-	-	-
Ammonium Nitrate sat'd	A	A	A	A	A	A	B	A
Ammonium Persulfate sat'd	A	A	A	A	-	A	A	B
Ammonium Sulfate sat'd	A	A	A	A	A	B	-	A
Ammonium Sulfide sat'd	A	-	-	A	A	B	D	A
Ammonium Thiocyanate sat'd	A	-	-	-	-	-	-	-
Amyl Alcohol* 100%	A	A	A	A	-	A	B	A
Aniline 100%	A	B	A	A	C	B	D	A
Antimony Chloride	A	-	-	-	-	-	-	A
Barium Carbonate sat'd	A	A	A	A	A	-	-	A
Barium Chloride	A	A	A	A	A	A	B	-
Barium Hydroxide	A	A	A	A	B	B	A	A
Barium Sulfate sat'd	A	A	A	A	-	-	A	A
Barium Sulfide sat'd	A	A	A	A	-	-	A	A
Benzene Sulfonic Acid*	A	D	-	-	-	-	-	A
Borax Cold sat'd	A	A	A	A	A	A	A	A
Boric Acid Dilute	A	A	A	A	A	A	A	A
Boric Acid Conc	A	A	A	A	-	A	A	A
Bromic Acid 10%	A	D	-	-	-	-	-	-
Calcium Bisulfide	A	A	A	B	A	A	A	-
Calcium Carbonate sat'd	A	A	A	A	A	A	A	A
Calcium Chlorate sat'd	A	A	A	-	A	-	-	A
Calcium Chloride sat'd	A	A	A	A	A	A	A	A
Calcium Hydroxide	A	A	A	A	A	A	A	A
Calcium Hypochlorite Bleach	A	A	A	B	A	A	A	A
Calcium Nitrate 50%	A	-	A	-	-	-	-	A
Calcium Sulfate	A	A	A	A	-	B	A	A
Carbon Dioxide 100% Dry	A	A	A	A	A	-	B	A
Carbon Dioxide 100% Wet	A	A	A	A	A	-	B	A
Carbon Dioxide Cold sat'd	A	-	A	A	A	-	B	A
Carbonic Acid	A	-	A	B	-	A	A	A
Castor Oil* Conc	A	-	A	-	-	A	A	A
Chrome Alum sat'd	A	-	B	-	-	-	A	B
Chromic Acid 20%	A	A	B	A	A	A	A	D
Cider*	A	-	A	A	-	-	A	-
Citric Acid* sat'd	A	B	A	A	A	A	A	A
Coconut Oil Alcohols*	A	-	-	A	-	-	A	D

Chemical Name	Polyethylene	Polypropylene	P.V.C.	316 Stainless Steel	Titanium	Hastelloy C-276	Viton	E.P.D.M.
Cola Concentrates*	A	-	-	A	-	-	-	-
Copper Chloride sat'd	A	A	A	D	A	-	A	A
Copper Cyanide sat'd	A	A	A	A	-	A	A	A
Copper Fluoride 2%	A	-	A	D	-	-	-	-
Copper Nitrate sat'd	A	A	A	A	A	A	A	-
Copper Sulfate Dilute 5%	A	A	A	A	A	-	A	A
Copper Sulfate sat'd	A	-	-	A	A	-	-	A
Cottonseed Oil*	A	-	A	A	-	-	A	B
Cuprous Chloride sat'd	A	-	-	-	-	-	A	A
Cychohexanol*	A	-	-	A	-	-	A	D
Detergents Synthetic*	A	A	A	A	-	-	A	A
Developers, Photographic	A	-	A	A	A	-	A	-
Dextrin sat'd	A	-	-	-	-	-	-	-
Dextros sat'd	A	A	A	-	-	-	-	-
Dibutylphthalate	A	-	-	-	-	-	B	C
Disodium Phosphate	A	A	D	D	D	A	A	-
Ethylene Glycol*	A	D	A	A	-	-	A	A
Ferric Chloride sat'd	A	A	A	D	D	-	A	A
Ferric Nitrate sat'd	A	A	A	A	-	-	A	A
Ferric Sulfate	A	A	A	A	A	A	A	A
Ferrous Chloride sat'd	A	A	A	D	A	-	A	A
Ferrous Sulphate	A	A	A	A	A	B	A	A
Flouboric Acid	A	-	A	B	D	A	A	D
Flousilicic Acid 32%	A	-	A	C	-	B	A	A
Flousilicic Acid conc.	A	-	A	D	-	B	A	A
Formaldehyde* 40%	A	A	A	A	A	A	A	A
Formic Acid* 0-20%	A	A	D	A	-	A	B	A
Formic Acid* 20-50%	A	A	D	A	C	A	B	A
Formic Acid* 100%	A	A	D	A	-	A	B	A
Fructose sat'd	A	A	A	A	-	-	-	-
Fruit pulp	A	A	A	A	-	-	A	-
Gallic Acid sat'd	A	-	-	-	-	-	-	A
Glucose	A	A	A	A	-	-	A	A
Glycerine*	A	A	A	A	A	A	A	A
Glycol*	A	-	A	-	-	-	-	A
Glycolic Acid* 30%	A	A	A	-	-	A	A	-
Grape Sugar sat'd ag	A	A	A	A	-	-	-	-
Hydrobromic Acid 50%	A	B	A	D	A	A	A	-
Hydrocyanic Acid sat'd	A	A	A	-	C	A	A	-
Hydrochloric Acid 10%	A	A	A	D	C	A	A	A
Hydrochloric Acid 30%	A	A	A	D	C	A	A	A
Hydrochloric Acid 35%	A	A	A	D	C	A	A	D
Hydrochloric Acid conc.	A	A	A	D	C	A	A	D
Hydrofluoric Acid 40%	A	A	D	D	D	B	A	D
Hydrofluoric Acid 60%	A	D	D	D	D	B	A	D
Hydrofluoric Acid 75%	A	D	D	D	D	B	A	D
Hydroflousilicic Acid	A	B	B	-	A	-	-	A
Hydrogen Bromide 10%	A	-	D	-	-	-	-	-
Hydrogen Peroxide 30%	A	A	A	A	B	A	A	D
Hydrogen Peroxide 90%	A	A	A	D	B	A	A	D

Chemical Name	Polyethylene	Polypropylene	P.V.C.	316 Stainless Steel	Titanium	Hastelloy C-276	Viton	E.P.D.M.
Hydrogen Phosphide 100%	A	-	-	-	-	A	-	-
Hydroquinone	A	-	-	-	-	-	-	C
Hydrogen Sulfide	A	A	A	A	A	-	D	B
Inks*	A	-	-	A	-	-	A	-
Iodine (alc. Sol) conc.	A	D	D	D	A	B	A	B
Lactic Acid* 10%	A	A	A	-	A	-	A	A
Lactic Acid* 90%	A	A	A	A	A	-	A	B
Latex*	A	A	A	A	-	-	A	A
Lead Acetate sat'd	A	A	A	B	A	-	D	A
Lube Oil	A	A	A	A	-	-	A	C
Magnesium Carbonate sat'd	A	A	A	A	-	B	-	-
Magnesium Chloride sat'd	A	A	A	A	A	A	A	A
Magnesium Hydroxide sat'd	A	A	A	A	A	-	A	A
Magnesium Nitrate sat'd	A	A	A	A	-	-	-	A
Magnesium Sulphate sat'd	A	A	A	A	A	B	A	A
Mercuric Chloride sat'd	A	-	A	D	A	B	A	A
Mercurous Nitrate sat'd	A	-	A	-	-	-	-	A
Milk	A	A	A	A	A	-	A	A
Mineral Oils	A	-	A	A	-	-	-	D
Molasses	A	A	A	A	-	-	A	A
Nickel Chloride sat'd	A	A	A	A	A	-	A	A
Nickel Nitrate conc.	A	A	A	A	-	-	-	-
Nickel Sulfate sat'd	A	A	A	A	-	-	A	A
Nitric Acid* 0-30%	A	A	A	A	A	A	A	A
Oils & Fats	A	A	-	A	-	-	A	B
Oleic Acid conc.	A	A	A	A	-	-	B	D
Orange Extract*	A	-	-	A	-	-	-	-
Oxalic Acid* dilute	A	A	A	-	C	B	A	-
Oxalic Acid* sat'd	A	A	A	A	C	-	A	A
Perchloric Acid 10%	A	-	-	-	-	-	-	A
Phosphoric Acid up to 30%	A	A	A	A	A	A	A	A
Phosphoric Acid over 30%	A	A	A	B	B	A	A	A
Phosphoric Acid over 90%	A	A	A	B	B	A	A	A
Phosphoric (Yellow) 100%	A	-	-	-	-	-	-	-
Phosphorus Pentoxide 100%	A	-	-	-	-	-	-	-
Photographic Solutions	A	A	A	A	A	A	-	-
Pickling Baths								
Sulfuric Acid*	A	-	-	B	-	-	A	D
Hydrochloric Acid*	A	-	A	D	A	-	A	D
Sulfuric-Nitric*	A	-	-	B	-	-	A	D
Plating Solutions								
Brass*	A	A	A	A	-	A	-	B
Cadmium*	A	A	A	-	-	A	-	B
Copper*	A	A	A	-	-	-	A	B
Gold*	A	A	A	A	-	-	A	B
Indium*	A	A	A	A	-	-	A	B
Lead*	A	A	A	-	-	-	A	B
Nickel*	A	A	A	-	-	-	A	B
Rhodium*	A	-	-	-	-	-	-	B
Silver*	A	A	A	A	-	-	A	B
Tin*	A	A	A	A	-	-	A	B
Zinc*	A	A	A	A	A	-	A	B
Potassium Bicarbonate sat'd	A	-	A	B	-	-	A	A
Potassium Borate 1%	A	-	-	-	-	-	-	-
Potassium Bromate 10%	A	-	A	A	-	-	-	-
Potassium Bromide sat'd	A	A	A	A	A	A	-	A
Potassium Carbonate	A	A	A	A	-	B	A	A
Potassium Chlorate sat'd	A	A	A	A	-	B	A	A
Potassium Chloride sat'd	A	A	A	A	A	B	A	A
Potassium Chromate 40%	A	A	A	B	A	A	A	-
Potassium Dichromate 40%	A	A	A	A	A	B	A	A
Potassium Hydroxide 20%	A	A	A	A	C	B	D	A

Chemical Name	Polyethylene	Polypropylene	P.V.C.	316 Stainless Steel	Titanium	Hastelloy C-276	Viton	E.P.D.M.
Potassium Hydroxide conc.	A	A	A	A	C	B	D	A
Potassium Nitrate sat'd	A	-	A	A	-	B	-	A
Potassium Perborate sat'd	A	-	-	-	-	-	A	-
Potassium Perchlorate 10%	A	-	-	-	-	-	-	-
Potassium Permanganate	A	A	D	A	A	A	A	A
Potassium Sulfate conc.	A	A	A	B	A	B	A	A
Potassium Sulfide conc.	A	A	-	-	A	-	A	B
Potassium Sulfite conc.	A	A	A	-	A	-	A	D
Potassium Persulphate sat'd	A	-	A	-	-	-	-	-
Propylene Glycol*	A	-	-	A	-	-	A	A
Rayon Coagulations Bath*	A	-	-	-	-	-	-	-
Sea Water	A	A	A	A	A	-	A	A
Selenic Acid	A	-	-	-	-	-	-	-
Shortening*	A	A	-	A	-	-	-	-
Silicic Acid	A	-	-	-	-	-	-	-
Silver Nitrate Sol.	A	A	A	A	-	-	A	A
Soap Solution* any conc	A	A	D	A	-	-	A	A
Sodium Acetate sat'd	A	A	A	A	A	-	A	A
Sodium Benzoate 35%	A	-	-	-	-	-	-	-
Sodium Bicarbonate sat'd	A	A	A	A	-	B	A	A
Sodium Bisulfate sat'd	A	A	A	A	A	A	A	A
Sodium Bisulfite sat'd	A	A	A	A	A	B	A	A
Sodium Borate	A	-	-	-	-	-	A	A
Sodium Bromide Dilute Sol.	A	-	-	-	-	-	A	-
Sodium Carbonate conc.	A	A	A	A	A	-	A	-
Sodium Carbonate	A	A	A	A	A	-	A	A
Sodium Chlorate sat'd	A	A	A	A	A	A	A	-
Sodium Chloride sat'd	A	A	A	A	A	A	A	-
Sodium Dichromate sat'd	A	-	-	-	-	-	-	A
Sodium Hydroxide conc.	A	A	A	A	A	B	B	A
Sodium Hypochlorite to 17%*	A	A	A	D	A	B	A	B
Sodium Nitrate	A	A	A	A	A	-	A	A
Sodium Sulfate	A	A	A	A	A	B	A	A
Sodium Sulfide 25%	A	A	A	A	A	-	A	A
Sodium Sulfide sat's sol	A	A	A	A	A	-	A	A
Sodium Sulfite sat'd	A	A	A	A	A	-	A	A
Stannic Chloride sat'd	A	-	A	A	A	-	A	A
Stannous Chloride sat'd sol	A	-	A	A	A	-	A	A
Starch Solution* sat'd	A	-	A	-	-	-	A	A
Stearic Acid* 100%	A	D	-	-	A	-	A	C
Sulfuric Acid 0-50%	A	A	A	B	A	A	A	C
Sulfuric Acid 70%	A	A	A	B	D	B	A	D
Sulfuric Acid 80%	A	D	D	-	-	A	A	D
Sulfurous Acid	A	A	A	B	A	B	A	C
Tallow	A	-	-	A	-	-	A	A
Tannic Acid* 10%	A	A	A	A	A	-	A	A
Tanning Extracts* Comm	A	-	A	A	-	A	-	-
Tartaric Acid sat'd	A	A	A	A	A	B	A	A
Transformer Oil	A	A	A	A	-	-	A	D
Trisodium Phosphate sat'd	A	-	-	-	-	-	-	-
Urea* Up to 30%	A	-	A	A	-	-	A	-
Urine	A	A	A	A	-	-	A	-
Vinegar Comm.	A	A	A	A	-	-	A	A
Vanilla Extract*	A	-	-	A	-	-	-	-
Water-All Types	A	A	A	A	A	A	A	A
Wetting Agents*	A	-	-	A	-	-	-	-
Whiskey*	A	A	A	A	-	-	A	A
Wines	A	A	A	A	-	-	A	A
Yeast	A	A	-	A	-	-	-	-
Zinc Chloride sat'd	A	A	-	A	-	-	-	-
Zinc Sulfate sat'd	A	A	A	A	A	-	A	A

\* Stress Cracking Agent

\*\* No Free Sulfuric Acid



Garrett, Indiana Facility

## Assmann Corporation of America

Assmann quality polyethylene tanks are manufactured in state-of-the-art rotational molding facilities in Garrett, Indiana and Marshall, Texas. Tanks up to 12 ft diameter by over 16 ft tall are shipped from these locations throughout North America.

### Checklist of Information We Need to Know

For additional information regarding Assmann polyethylene tanks, please contact your local Authorized Assmann Distributor

or Representative. The following is information needed to provide accurate pricing and details for your application.

- Chemical or fluid to be stored
- Volume/gallons to be stored
- Type of polyethylene for intended application
- Address of installation location
- Estimated completion date desired
- Number of tanks, model, dimensions, color anticipated
- Fittings, size, material desired
- Space limitations, ambient environment characteristics
- Temperature maintenance requirements
- Contact name, phone, fax number

### The Assmann Warranty

Assmann Corporation of America warrants that all tanks manufactured and sold shall be free of defects in material and workmanship for a period of five (5) years limited. All tanks carry two (2) years full warranty with the remainder prorated from date of shipment, with the following exceptions:

1. Stress cracking agents, i.e. concentrated sulfuric acid or sodium hypochlorite, special warranty may apply, consult factory.
2. All tanks must be used in accordance with Assmann chemical resistance charts.
3. All tanks must be supported or mounted in a manner approved by Assmann and in accordance with approved installation and use instructions.
4. Transport and storage tanks must be used in accordance with temperature limitation of polyethylene (HDLPE, linear = 120° F. XLPE, crosslinked = 150° F.)
5. Warranty does not cover misuse, fire, accident, negligence or tanks which have been altered after the said date of shipment, except alterations or repairs made only by Assmann.
6. Liability of the manufacturer under this warranty is limited to the repair and/or replacement of the tank only, (at manufacturer's option) which has been proven to have been defective at date of shipment. Assmann will bear no liability for consequential or incidental damages, losses or expenses of any kind relative to tank failure.
7. Should purchaser or user not pay for any tanks in full when as due, Assmann's warranty shall be deemed suspended until such time as Assmann receives payment in full. The suspended period will not be added on to the warranty period applicable to said order.
8. Intermediate Bulk Containers (IBC) manufactured by Assmann are so warranted for one (1) year from date of shipment.
9. Hardware and accessories are warranted for one (1) year from date of shipment.
10. Consult factory for complete warranty.



Assmann Corporation of America  
300 N. Taylor Road, Garrett, IN 46738

Phone: 888-357-3181 • Fax: 888-Tank Fax (826-5329)

Phone: 260-357-3181 • Fax: 260-357-3738

E-mail: [info@assmann-usa.com](mailto:info@assmann-usa.com)

Internet: [www.assmann-usa.com](http://www.assmann-usa.com)

Manufacturing facilities in Garrett, IN and Marshall, TX

Authorized Distributor: